



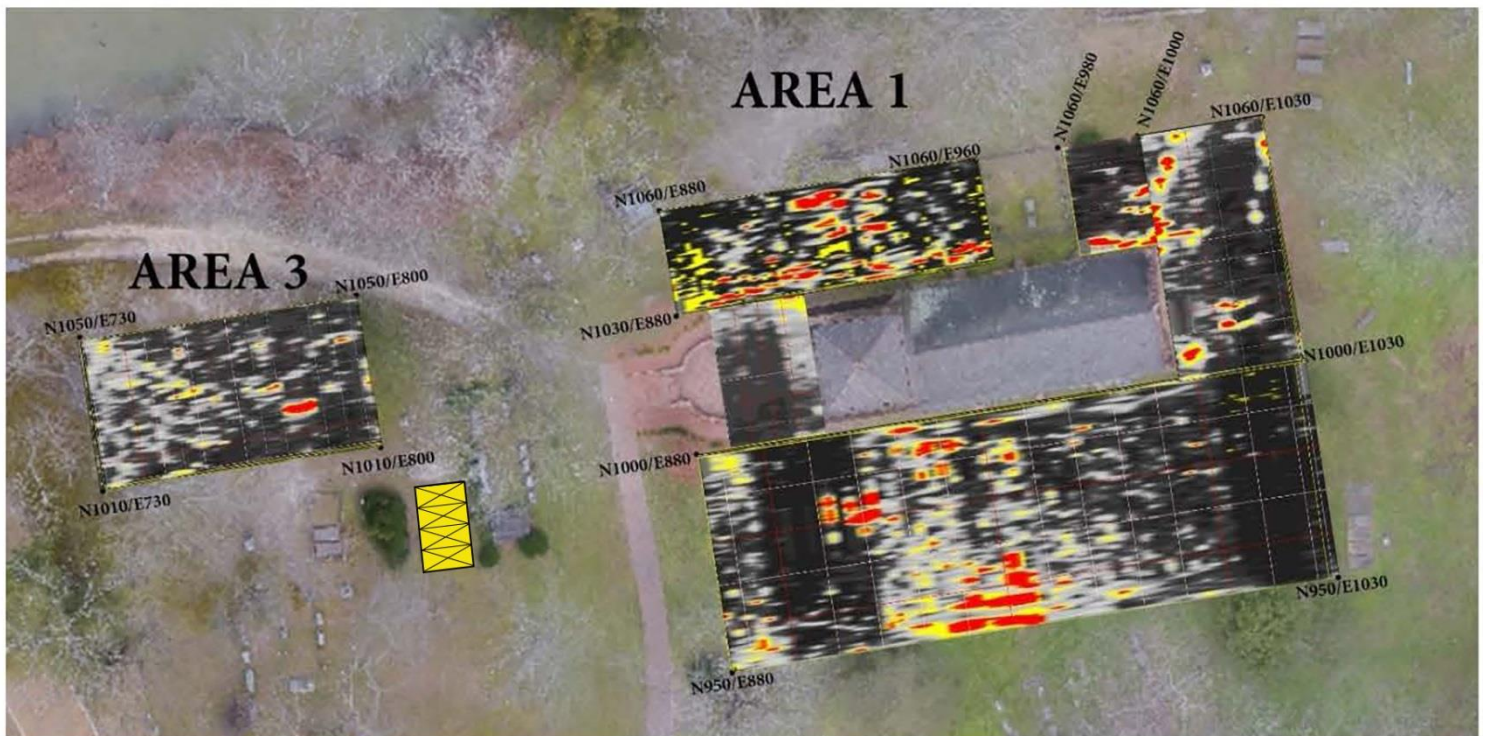
14477 Benn's Church Boulevard  
Smithfield, VA 23430  
(757) 357-3367

### Metes and Bounds

A two (2) grave lot on the land of the Grantor situate on the west side of the walkway that leads to St. Luke's Historic Church, measuring ten (10) feet by ten (10) feet. The eastern boundary measuring eight (8) feet west of the western boundary for the Luter and Day lots. The northeast corner measuring 11 feet, 6 inches (11 feet, 6 inches) from the northwest boundary marker for the Luter lot. The northwest corner measuring three feet, three inches (3 feet, 3 inches) south from the headstone for Rosa Nock Glover and eleven feet, four inches (11 feet, four inches) east from the headstone for Addeland J. Goodrich.

### OR,

A four (4) grave lot on the land of the Grantor situate on the west side of the walkway that leads to St. Luke's Historic Church, measuring ten (10) feet by ten (20) feet. The eastern boundary measuring eight (8) feet west of the western boundary for the Luter and Day lots. The northeast corner measuring 11 feet, 6 inches (11 feet, 6 inches) from the northwest boundary marker for the Luter lot. The northwest corner measuring three feet, three inches (3 feet, 3 inches) south from the headstone for Rosa Nock Glover and eleven feet, four inches (11 feet, four inches) east from the headstone for Addeland J. Goodrich. The southwestern corner measuring ten (10) feet from the northeast corner marker for the Andrews lot, which is inscribed with the initials J.P.A. The southeast corner measuring nine (9) feet southwest from the southwest corner of the Day mausoleum.



## Scope of Completed Work

### Churchyard Exploratory Trench

#### Historic St. Luke's Church

#### Smithfield, Virginia

October 2019

Given the close proximity of known historic graves to a proposed new burial plot at Archaeological Site 44IW0271, an exploratory trench investigation took place to record site stratigraphy and identify any culturally significant features. Data recovery involved the recording and excavation of all identified cultural deposits or features within an 18' x 1.5' trench. Excavation was completed using flat shovels and trowels, and major features were screened using ¼" wire mesh. All soil layers and feature fill soils were described using standard Munsell color charts and U.S. Department of Agriculture textural terminology.

Two archaeological features were found to be present within the trench. Feature 1 contained a mixture of prehistoric and colonial artifacts. The flakes and pottery sherds located within Feature 1 suggest that the circular feature is Middle Woodland period (550 BC-AD 300) Native American. Due to the mixture of artifacts and nature of soil layers it was determined that both Feature 1 and Feature 2 have been disturbed during previous episodes of use or occupation. Feature 2 also contained a mixture of prehistoric and colonial artifacts, including a Chesapeake-type tobacco pipe bowl fragment (1650–1680AD) and fragments of handmade brick. It was determined that Feature 2 was likely a later colonial feature that disturbed the southern portion of Feature 1. No human remains were found during investigations.

A plan map and profile map of the excavated trench were completed; and all artifacts were assessed, cataloged, bagged and tagged in the CNU Archaeology Lab.

## **Artifact Analysis:**

Trench 1/Feature 1: The artifacts recovered from Trench 1/Feature 1 were a mixture of prehistoric and colonial periods. The prehistoric artifacts found included: four sherds of Prince George ware (550 BC-AD 300), a common pottery type used by Native Americans during the Middle Woodland period; two quartzite scrapers; one quartzite flake; and a small charcoal fragment. The colonial material included: two crown glass windowpane fragments and one fragment of handmade brick. Feature 1 yielded a fragment of granite which was probably used architecturally either as a tombstone; stoop or lintel. Also, two fragments of concreted sand and two fragments of naturally occurring siltstone were retrieved.

Trench 1/Feature 2: Six artifacts were recovered from Trench 1/Feature 2. They included: one prehistoric quartzite flake; one halved river cobble; one Chesapeake-type tobacco pipe bowl sherd (1650-1680); two fragments of handmade brick; and one fragment of naturally occurring bog iron (iron oxyhydroxide).

Due to the mixture of prehistoric and colonial artifacts as well as some naturally occurring items, it was determined that both Feature 1 and Feature 2 have been disturbed during previous episodes of occupation/use.

**ARTIFACT INVENTORY  
CHURCHYARD EXPLORATORY TRENCH  
HISTORIC ST. LUKE'S CHURCH  
SMITHFIELD, VIRGINIA**

**SITE: 44IW0271**

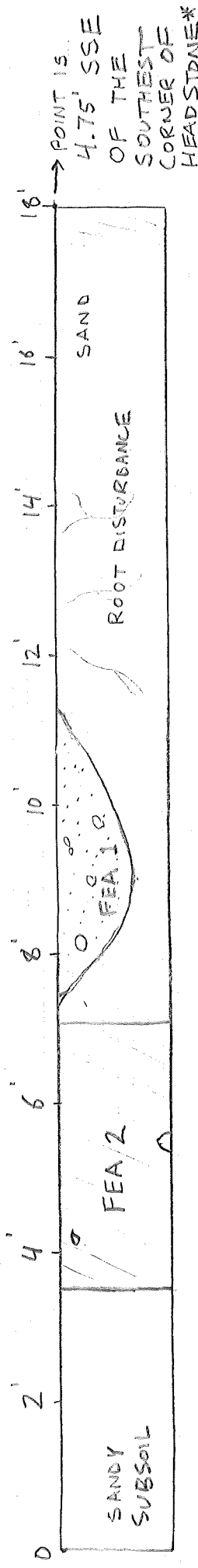
**RECORDER: Mary Clemons**

**DATE: October 2019**

<b>Provenience</b>	<b>Quantity</b>	<b>Description</b>
Trench 1/Feature 1	4	Pot sherds; Prince George ware, body, sand and pebble tempered, 550 BC-AD 300
	2	Windowpane fragments; green, crown glass, pre-1826
	1	Brick fragment; handmade, colonial
	1	Granite fragment; architectural
	1	Scraper; quartzite
	1	Scraper, thumbnail; quartzite
	1	Flake, percussion; quartzite, secondary thinning
	2	Siltstone fragments
	1	Charcoal fragment
	2	Fragments; concreted sand
Trench 1/Feature 2	1	Tobacco pipe bowl sherd; Chesapeake-type, local clay, 1661-1681
	2	Brick fragments; handmade, colonial
	1	Bog iron fragment; naturally occurring
	1	Flake, percussion; quartzite, finding the blank, cortical
	1	Cobble, river fragment; quartzite, halved

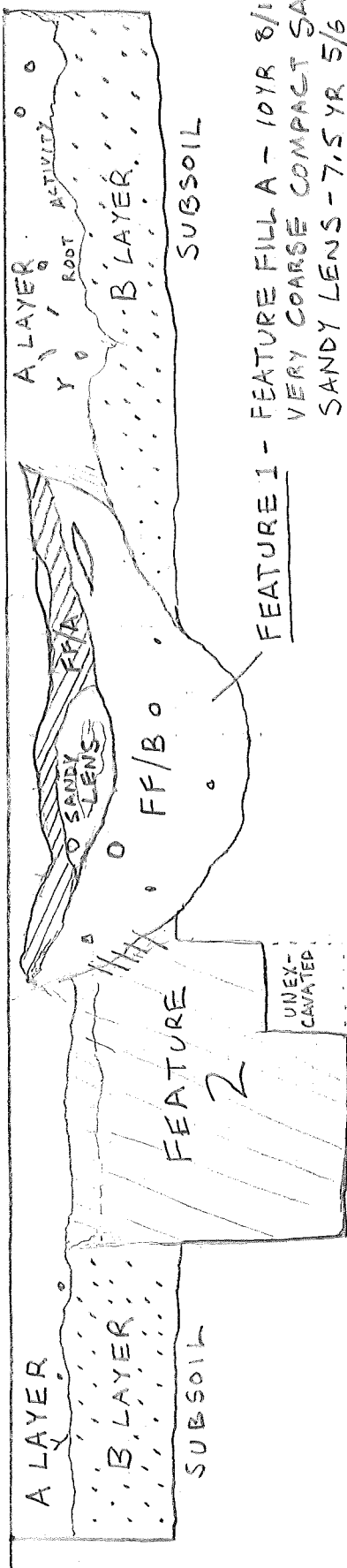
441W0271 N →  
 TRENCH 1  
 MDT - 10/2019  
 PLAN MAP

1" = 2'



FEATURE 1 - 10YR 6/2 LIGHT BROWNISH GRAY SANDY LOAM w/ 10YR 7/4 VERY PALE BROWN LOAMY SAND (FF/B)  
FEATURE 2 - 10YR 6/3 PALE BROWN VERY SANDY LOAM  
SUBSOIL - 10YR 7/2 LIGHT GRAY MOTTLED w/ 10YR 7/6 YELLOW SAND

PROFILE MAP



A LAYER - 10YR 4/2 DARK GRAYISH BROWN SANDY LOAM  
B LAYER - 10YR 5/3 BROWN VERY SANDY LOAM

FEATURE 1 - FEATURE FILL A - 10YR 8/1 WHITE VERY COARSE COMPACT SAND  
 SANDY LENS - 7.5 YR 5/6 STRONG BROWN AND 10YR 5/1 GRAY COARSE COMPACT SAND  
 FEATURE FILL B - 10YR 6/2 LIGHT BROWNISH GRAY SANDY LOAM w/ 10YR 7/4 VERY PALE BROWN LOAMY SAND

\* HEADSTONE READS: ROSA NOCK GLOVER 1885-1919